

Installing the DWG/DXF Translator On Your Computer

The DWG/DXF Translator for **ARRIS & BuildersCAD** is a 3rd party product from **Expert Infocad**. It is a very robust translator which imports DWG or DXF files into **ARRIS/BuildersCAD**, and exports **ARRIS/BuildersCAD** databases to DWG or DXF file format.

Downloading the Translator

The latest version of the DWG/DXF translator (7.9) from Expert Infocad may be downloaded from the **ARRIS** web site at www.arriscad.com or the **BuildersCAD** site at www.builderscad.com. On both sites the download is in the *Support* section. Select the *Product Downloads* link on the *Support* page. Click on “Contact Your Dealer or Sigma Design” under Expert InfoCAD DWG/DXF Translator near the bottom of the *Downloads* page to begin the version 7.9 download. Save the download to your computer.

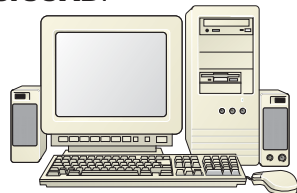
Be sure that Translator 7.9 is the version for which you have authorization codes. For versions of the translator prior to 7.9 (7.3 - 7.8), contact Sigma Design. Note that versions of the DWG/DXF Translator do not necessarily correspond to particular versions of **ARRIS/BuildersCAD**. If you are not sure about which version of the translator you have, contact your dealer or Sigma Design.

The download is a zip file which contains all of the files necessary to install the translator. The file name is `dwgxx.zip` where “xx” is the version number of the translator.

Installing the Translator

To install the DWG/DXF Translator, you must have **ARRIS** or **BuildersCAD** installed on your computer first. The DWG/DXF Translator may be installed into which ever version of **ARRIS** or **BuildersCAD** you have. The translator uses a separate version numbering system and is not tied to a particular version of **ARRIS** or **BuildersCAD**.

To install the translator, extract the contents of the downloaded zip file to a temporary directory. Once the install files are extracted, double click on the file “`setup_arris.exe`” to begin the installation.



At the first menu, select the Expert Infocad product icon you are installing (“ETRANS” followed by the version number). The next screen will be the Welcome screen. After reading this menu, click “Next”. The next screen will be the License Agreement. Read this carefully and then click “Next”.

The next screen is the product location. The translator install will find the current version of **ARRIS/BuildersCAD** automatically and use it as the default location to install. If you have more than one version of **ARRIS** or **BuildersCAD** installed on your computer, take note of where the translator is installing and be sure that it is being installed into the correct location for the version of **ARRIS/BuildersCAD** where you want to install the translator.

The final screen will verify install information and location. Click “Finish” to install the translator.

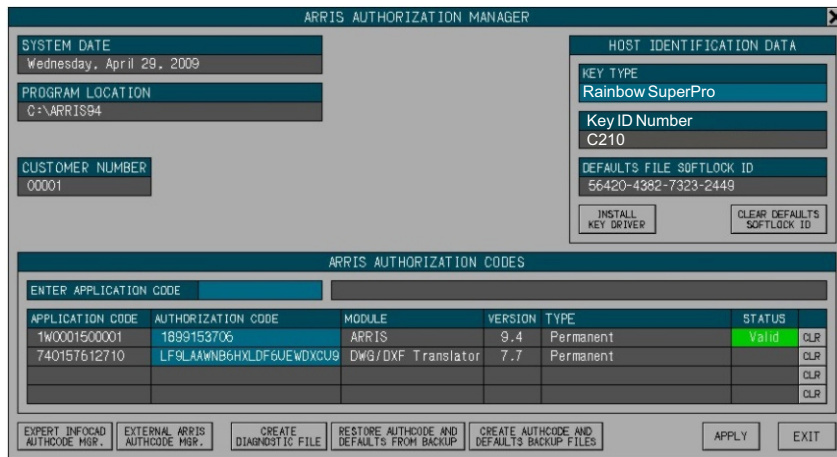
Authorizing the Translator

The DWG/DXF Translator is authorized just like **ARRIS** or **BuildersCAD** by using the **AUTHORIZATION MANAGER** menu in **ARRIS/BuildersCAD**.

Within **ARRIS/BuildersCAD**, open the **Authorization Manager** Menu. This menu is found by selecting the Customization icon on the **Desktop** menu, then selecting the Authorize button on the **Customization** pull down menu. The **Authorization Manager** Menu may also be found by selecting Help on the **Windows Menu Bar** and then Authorize **ARRIS** on the pull down menu.

Sigma Design provides a *Product Authorization* form containing the **ARRIS/ BuildersCAD Application Code** and *Authorization Code* for each licensed key number. If the **Expert Infocad DWG/DXF Translator** was purchased through Sigma Design, the translator authorization codes are also shown on this form for each license. Be sure that the codes that you enter match the ones for the key number on your computer.

Installing the DWG/DXF Translator On Your Computer



Click on the box next to the Enter Application Code title under the ARRIS/BuildersCAD AUTHORIZATION CODES section of the menu, and enter your **DWG/DXF Translator** Application Code. This code is a 12 digit number. When this code is entered, **ARRIS/BuildersCAD** will display it in the first line of the ARRIS/BuildersCAD AUTHORIZATION CODES list below, along with information about the type of Authorization. The AUTHORIZATION CODE box next to the Application code will highlight and **ARRIS/BuildersCAD** will prompt for this code. The **DWG/DXF Translator** Authorization code is a 24 character code consisting of both alpha characters and numbers. Enter this code.

When all codes have been entered, Click the APPLY button on the **AUTHORIZATION MANAGER** menu. The **DWG/DXF Translator** is now authorized and ready to go! Note that the STATUS column in the **ARRIS / BuildersCAD** Authorization Manager menu will remain blank (No "Valid" status shown) for the DWG/DXF Translator. This is normal as the translator is a 3rd party product and **ARRIS/ BuildersCAD** has no way to check the validity of the translator code.

Running the Translator

The Expert Infocad Translator plug-in is embedded in **ARRIS/BuildersCAD**. Before using the Expert Infocad DWG/DXF Translator in **ARRIS** or **BuildersCAD**, be sure the translator plug-in is loaded. This is done by selecting the Plug-In icon at the far right end of the Desktop menu, and then selecting the Expert Translator on the Plug-In list.

The Expert Infocad Translator itself is found by selecting the *File* icon on the left end of the **Desktop** menu, then selecting either *Inport* or *Export* on the **File** menu. On the pop-up menu that appears, select the specific translation task you wish to do. If exporting to DWG or DXF, Select the Expert Translator DWG or Expert Translator DXF option on the ARRIS -> DWG EXPORT pop-up menu.

Full documentation for the **Expert Infocad Translator** is found inside a \doc folder under the translator application folder inside your **ARRIS** or **BuildersCAD** installation. The path to this folder is `$ARRIS\ap\infocad.vn\dwg.ap\doc`.



Updated December 19, 2017