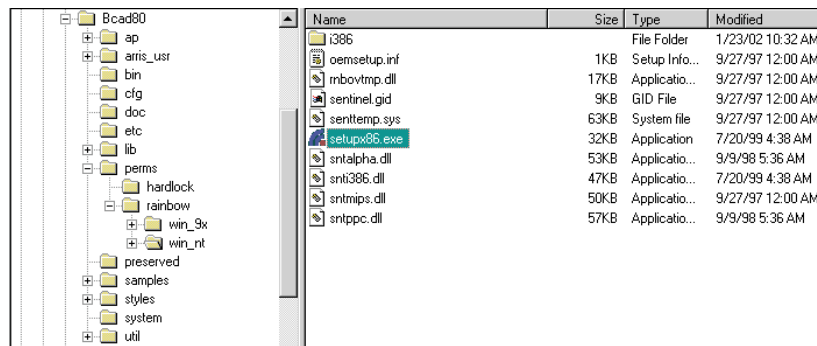


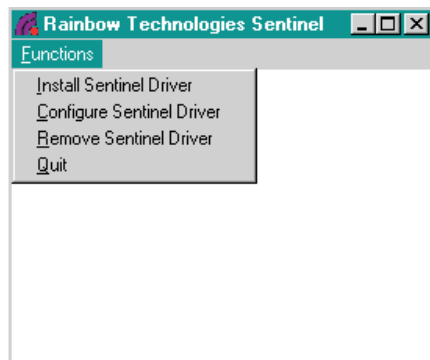
Installing The Rainbow Sentinel Key Driver on Windows NT

The Rainbow Sentinel Hardware Key requires a driver to operate properly on your computer. The driver required for Windows NT is different from that required for other versions of Microsoft Windows. To install the Sentinel driver for Windows NT, follow the steps below.

1. Open the Windows Explorer and navigate to the **BuildersCAD**
2. Locate the Driver executable file. On Windows NT, this file is “*setupx86.exe*” located in the “*BCAD 91\perms\rainbow\win_nt*” directory.



3. Double click the driver executable file. This will display a pop-up menu with the heading Rainbow Technologies Sentinel. Select on *Functions* in the top left corner of the menu and select the option “Remove Sentinel Driver”.



4. To reinstall the driver, select “*Install Sentinel Driver*” from the pop-up menu. A pop-up menu will display the path to the driver. Select “*OK*”.
5. After the driver is installed, restart your computer.

