

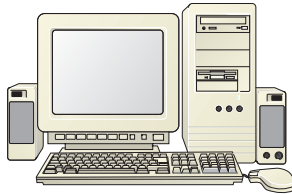
# Installing BuildersCAD 9.4 On Your Computer

**Congratulations** on your purchase of **BuildersCAD**. The following directions will assist you in installing **BuildersCAD 9.4** from the download file or product CD. Please make sure you have the following items readily accessible to you during the process:

- A. Product Download file or CD-ROM
- B. Hardware lock  
(USB or Parallel Port key)
- C. Authorization Codes

## System Requirements

**BuildersCAD** runs on the Microsoft Windows Vista/XP/2000/NT/ME/98/95 operating systems.



Personal computer hardware requirements include Pentium 4 or higher processor and 256 MB of RAM. The hard drive space recommended depends on the amount of data to be stored. The **BuildersCAD** program directory requires approximately 250 MB of hard disk space when installed. A 3 button mouse is not required, but is highly recommended.

## Installing BuildersCAD

**BuildersCAD** is very simple to install, the process being much like other MS Windows applications. Before you begin, close all other Windows applications.

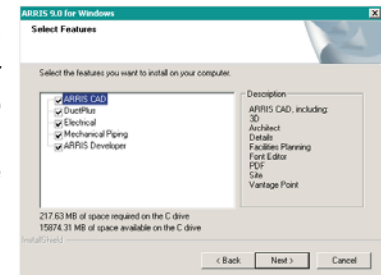
The **BuildersCAD 9.4** full installation download is found on the [www.builderscad.com](http://www.builderscad.com) web site in the *Support* section. The download is a zip file named BCAD\_91\_xxx\_Full.zip where the “xxx” represents the spin (update) number of the **BuildersCAD 9.4** release. This zip file contains a *setup.exe* program. Extract the *setup.exe* install program from the zip file and double click on it to begin the installation of **BuildersCAD** on your computer.

If you have the **BuildersCAD 9.4** installation program on a CD, start by placing the **BuildersCAD** Program CD into your CD ROM drive. The **BuildersCAD** setup program should start automatically. If it does not, you may start it manually by clicking on *Start -> Run -* and browsing to *Setup.exe* on your CD drive.

The Install Shield wizard will begin the setup process. Read and follow the directions on each dialog screen to complete the installation. The **BuildersCAD** setup program will first allow you to read and accept the **BuildersCAD** Software License Agreement.

The **BuildersCAD** setup program will next allow you to select the directory location on your computer where **BuildersCAD** is to be installed. The default is *C:\Program Files\BCAD 94*. Setup also allows the selection of optional installed features such as the DWG/DXF translator and additional plug-ins.

After the **BuildersCAD** setup program has installed **BuildersCAD** to your computer, click on Finish to exit the setup program. **BuildersCAD** is now installed and ready to authorize. Refer to the documentation on authorizing **BuildersCAD** on your computer.



In addition to the program directory, **BuildersCAD** automatically creates a new directory for data called *BCAD* under the drive of your choice. It also creates a directory below *BCAD* which corresponds to the *graphic user*. The *graphic user* directory name will automatically be set to the *login name* of the current login user.

## Authorizing BuildersCAD

The standard authorization for **BuildersCAD** is using a Rainbow Superpro USB or parallel port hardware key device. Specialized installations may also use a Softlock to authorize **BuildersCAD**. Refer to the authorization instructions in the **BuildersCAD** Bookshelf.



Updated August 7, 2009